



Equipped with AEM® Dryflow™ Filter  
No Oil Required!

# INSTALLATION INSTRUCTIONS

## PART NUMBER

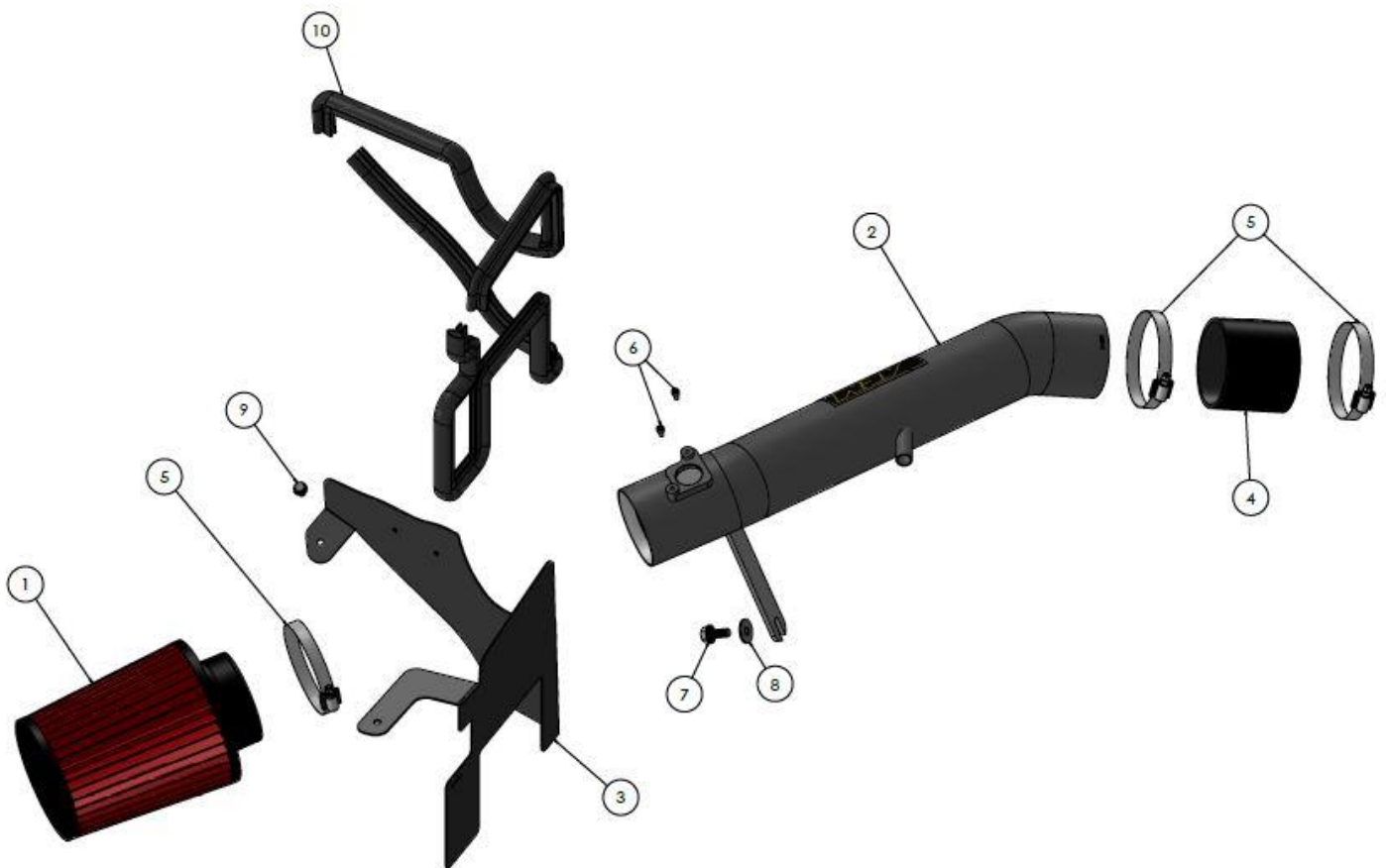
### 21-833C (GUN METAL GRAY FINISH)

---

2005-2013	Lexus	IS350	3.5L
2005-2013	Lexus	IS250	2.5L

Not legal for sale or use on any pollution controlled motor vehicle in California or states adopting California emission procedures. See [AEMIntakes.com](http://AEMIntakes.com) for CARB status on each part for a specific vehicle.

ITEM NO.	PART NUMBER	DESCRIPTION	QTY.
1	21-2113DK	AIR FILTER; 3.25" X 7" DRYFLOW	1
2	2-1539C	INTAKE TUBE; 3.25"OD X 20", 21-759; GUNMETAL GRAY	1
3	20-14021	HEAT SHIELD; LEXUS IS 06-08, TB/PC	1
4	5-325	HOSE; SILICONE 3.25 X 3.00" BLK	1
5	9452	1/2" BNDHOSE CLAMP, 2.90" - 3.75"	3
6	07733	BOLT; M4 - 0.07 8MM, A/H CAP, SS	2
7	1-2025	BOLT; HEX/FLANGE M8-1.25 X 20	1
8	559960	WASHER, 8MM SOFT MOUNT	1
9	22224	Bolt; M6-1.00x12 Hex; Flg, Grade 10.9	1
10	102472	EDGE TRIM; 3/4" BULB, TOP LOC, 66"L	1



Read and understand these instructions **BEFORE** attempting to install this product. Failure to follow installation instructions and not using the provided hardware may damage the intake tube, throttle body and engine. If you need any assistance please call 1-800-858-3333 to speak with a representative in our Customer Service Center before returning the product.

## 1. Preparing Vehicle

- Make sure vehicle is parked on level surface.
- Set the parking brake.
- If engine has run in the past two hours, let it cool down.
- Disconnect negative battery terminal.
- Do not discard stock components after removal of the factory system.
- Open the air intake kit package and make sure all parts are included.

Tools Needed:	Optional:
Screwdriver	Small Torque
10mm Socket	Wrench
Socket Driver	
Side Cutters	
4mm Hex Key	

## 2. Removal of stock system



- Remove the front apron by removing the plastic push rivets and lifting it out of the engine bay.



- Remove the plastic shrouding to the left of the engine by removing the clip and lifting it out.

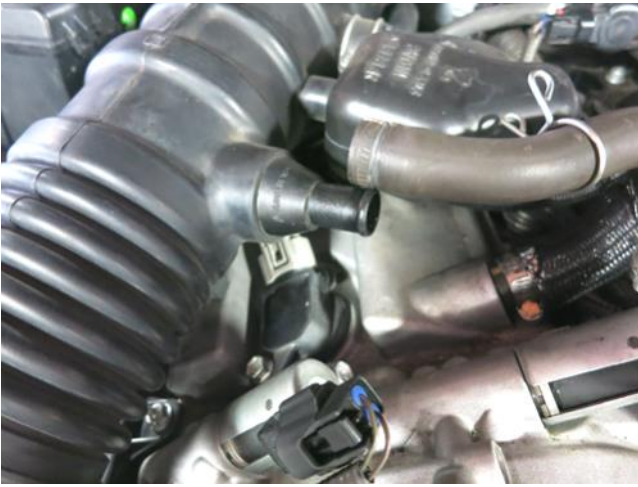


- Remove the engine cover by pulling up gently to release it from its rubber grommets.



- Disconnect the Mass Air Flow (MAF) sensor harness from the MAF sensor and air box.





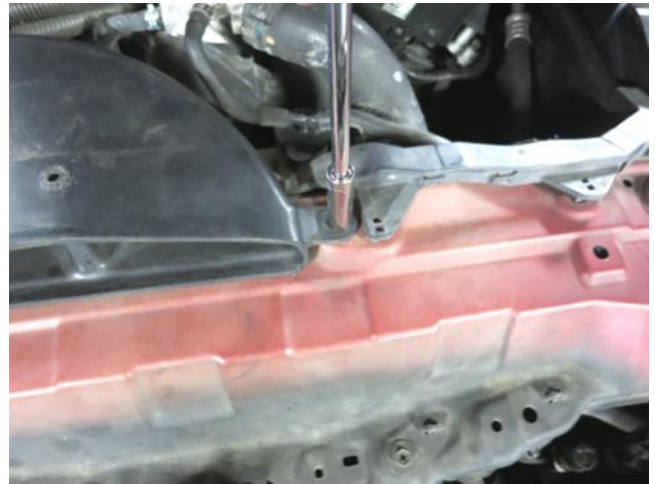
e. Disconnect the crankcase breather hose from the factory intake tract.



f. Loosen the hose clamp securing the intake tract to the throttle body.



g. Unlatch the air box lid from its base and lift the air box lid and hose from the engine bay.



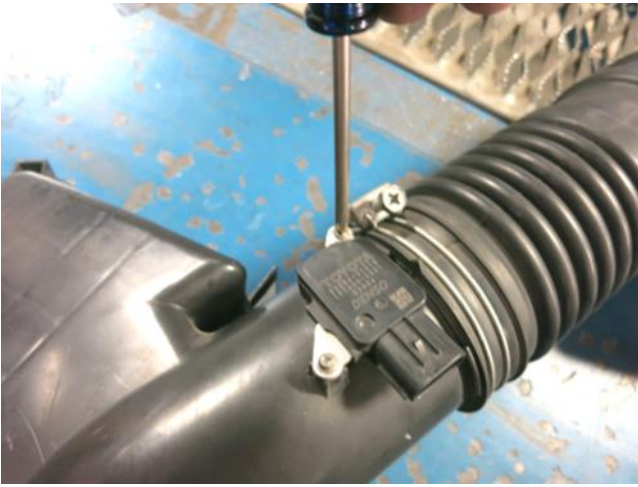
h. Remove the bolt securing the air scoop; it will be reused in step 3a.



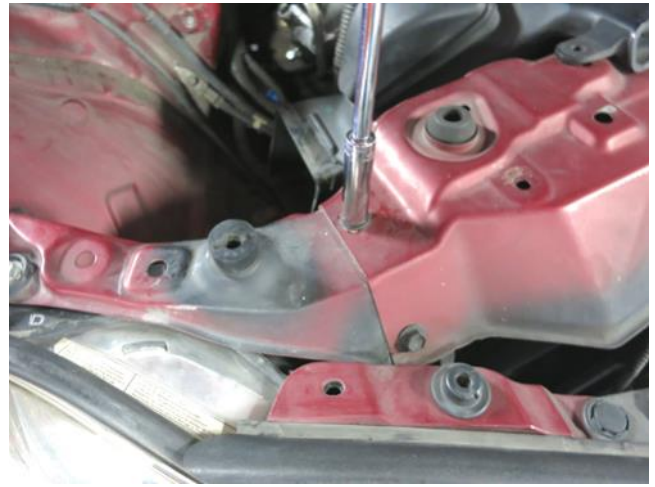
i. Remove the two bolts securing the air box base.



j. Lift the air box base up and out of the engine bay. Do not remove the air scoop.



k. Remove the MAF sensor from the air box lid; it will be reused in step 3b. Secure the factory screws into the air box lid as they will not be reused. **Do not discard any of your factory equipment.**



l. Remove the radiator support bolt shown. It will be reused in step 3e.

### 3. Installation of AEM® intake system.

- a. When installing the intake system, do not completely tighten the hose clamps or mounting hardware until instructed to do so.



a. Reattach the air scoop using the bolt removed in step 2h. Be sure the hole on the left-hand side of the scoop lines up with the radiator support hole when tightened.



b. Install the MAF sensor removed in step 2k into the AEM intake tube using the provided hardware.





c. Install the bolt and washer into the threaded hole in the engine block. Leave a 1/2" gap between the washer and block for the tube bracket to be installed.



d. Install the edge trim onto the heat shield as show. Trimming of the edge trim is required.



e. Install the heatshield into the engine bay as shown and secure with the provided bolt and the bolt removed in step 2l.



f. Install the provided coupler and hose clamps onto the throttle body and secure the throttle body side hose clamp.



g. Install the AEM Dryflow filter onto the AEM intake tube using the provided hose clamp.



h. Install the assembled intake tube into the engine bay by first inserting the end into the coupler and then lowering it into the heatshield.



i. Be sure the bracket is inserted into the previously installed bolt. Position the tube for best fit and tighten the bracket bolt and the hose clamp on the throttle body.



j. Connect the crankcase breather to the AEM intake tube and secure with the factory spring clamp.



k. Connect the MAF sensor harness to the MAF sensor as shown.



l. Reinstall the plastic shrouding using the plastic push clips.





STOCK INTAKE INSTALLED



AEM INTAKE INSTALLED

#### 4. Reassemble Vehicle

- a. Position all kit components for best fitment. Ensure that no components contact any unintended part of the vehicle.
- b. Check for proper hood clearance. Re-adjust components if necessary and re-tighten them.
- c. Inspect the engine bay for any loose tools and ensure that all fasteners that were moved or removed are properly tightened.
- d. Reconnect negative battery terminal and start engine. Let the vehicle idle for 3 minutes. Perform a final inspection before driving the vehicle.

#### 5. Service and Maintenance

- a. AEM Induction Systems requires cleaning the intake system's air filter element every 100,000 miles. When used in dusty or off-road environments, our filters will require cleaning more often. We recommend that you visually inspect your filter once every 25,000 miles to determine if the screen is still visible. When the screen is no longer visible some place on the filter element, it is time to clean it. To clean, purchase our Synthetic air filter cleaner, part number 1-1000 and follow the easy instructions.
- b. Use window cleaner to clean your powder coated AEM® intake tube.

**NOTE: DO NOT USE aluminum polish on powder coated AEM® intake tubes.**

For technical inquiries  
e-mail us at  
[sales@aemintakes.com](mailto:sales@aemintakes.com)  
or  
call us at  
800.992.3000



## **AEM Air Intake System Warranty Policy**

AEM® warrants that its intake systems will last for the life of your vehicle. AEM® will not honor this warranty due to mechanical damage (i.e. improper installation or fitment), damage from misuse, accidents or flying debris. AEM® will not warrant its powder coating if the finish has been cleaned with a hydrocarbon-based solvent. The powder coating should only be cleaned with a mild soap and water solution. Proof of purchase of both the vehicle and AEM® intake system is required for redemption of a warranty claim.

This warranty is limited to the repair or replacement of the AEM® part. In no event shall this warranty exceed the original purchase price of the AEM® part nor shall AEM® be responsible for special, incidental or consequential damages or cost incurred due to the failure of this product. Warranty claims to AEM® must be transportation prepaid and accompanied with dated proof of purchase. This warranty applies only to the original purchaser of product and is nontransferable. Improper use or installation, use for racing, accident, abuse, unauthorized repairs or alterations voids this warranty. AEM® disclaims any liability for consequential damages due to breach of any written or implied warranty on all products manufactured by AEM®. Warranty returns will only be accepted by AEM® when accompanied by a valid Return Merchandise Authorization (RMA) number. Credit for defective products will be issued pending inspection. Product must be received by AEM® within 30 days of the date RMA is issued.

If you have a warranty issue, please call (800) 992-3000 and our customer service department will assist you. A proof of purchase is required for all AEM® warranty claims.

**Not legal for sale or use on any pollution controlled motor vehicle in California or states adopting California emission procedures. See [AEMIntakes.com](http://AEMIntakes.com) for CARB status on each part for a specific vehicle.**